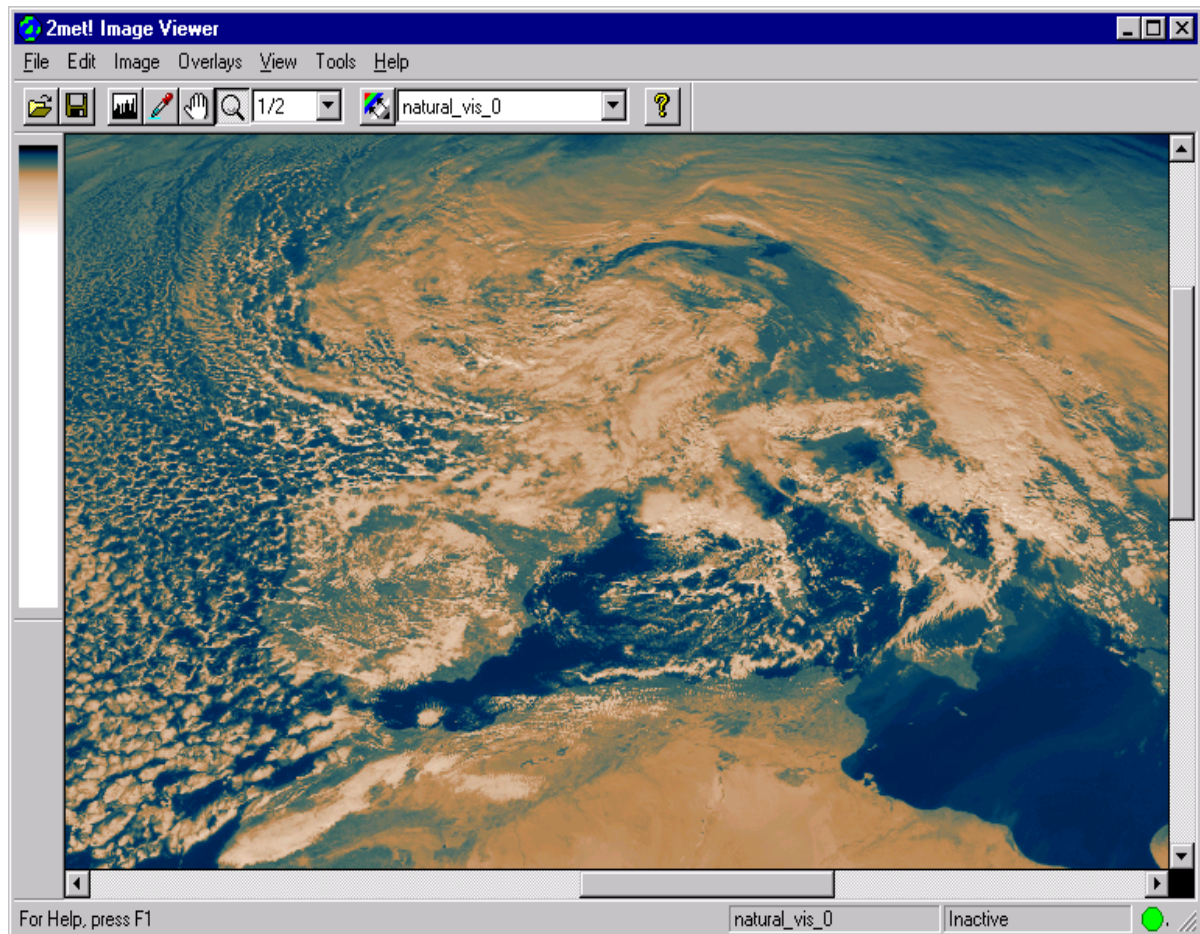


2met!® ACQUISITION HRI MTP HRI Acquisition Software

Release 1.1



FUNCTIONS

- Automatic data reception of all channels
- Automatic decryption
- Monitoring and Control of reception
- Data dispatching
- Quicklook MMI

ADVANTAGES

- Running on Windows platforms; Linux on request
- Adaptation support available at SCISYS Deutschland GmbH
- Highest reliability at excellent price-performance
- Full integration into 2met!® Systems
- Upgrade path to MSG available

System Requirements

The **2met!® ACQUISITION HRI** software is a main software product within a **2met!®** PDUS system. The **2met!® ACQUISITION HRI** software is layered on the Windows operating system running on any PC computer with a minimum performance of:

- 2.4 GHz CPU
- 256 MByte RAM
- 40 GByte Hard disc
- SCSI 2 Interface (or higher)

Linux systems can be supported on request.

For basic operation a **2met!® DSR II** digital satellite receiver of Type LR is necessary (or receiver type MHR-REC). For decryption purposes the decryption unit has to be provided with a METEOSAT Key Unit (MKU, available from EUMETSAT).

The Software Overview

The **2met!® ACQUISITION** for METEOSAT Transition Programme provides kernel functions for the following tasks:

- data reception
- automatic decryption (with MHR-DU)
- HRI format conversion
- Calibration

The **2met!® ACQUISITION HRI** includes a number of user MMIs which allow for:

- monitoring the quality of received data
- quicklook of HRI images
- control of reception settings
- logging of system events

The **2met!® ACQUISITION HRI** software package performs automatic reception of HRI formats. Acquisition and pre-processing is controlled by a reception schedule loaded into the MHR-DU/BS. The data conversion generates a calibrated or non-calibrated PIF from one format. One spectral range of one format can be selected as input. Upon data conversion a calibration can be performed. Three different methods are supported.

Incoming HRI data may be visualised in (near) real time without interfering the automatic background processing. The images may be displayed either with or without the grid information contained in the image data. Selectable colour tables for display enhance the images significantly. The quicklook allows a fast check whether the front-end is working or not.

All assembled and decrypted files are stored in an online buffer directory on the local system hard-disc for a configurable time. After this time period the files are automatically deleted.

The **2met!® ACQUISITION HRI** software includes monitoring functionality with regard to the reception quality of data.

With a Configuration Control MMI the user is able to change various configuration settings in the configuration database during runtime.

Data dispatch is implemented by a filter controlled data transfer either to a local directory or to a remote computer via FTP service.

Ordering Information

2met!® ACQUISITION HRI

Contacts

If you have any questions, please contact our Marketing and Sales Department at 2met@scisys.de



is a registered trademark of SCISYS Deutschland GmbH. Any information of this document can be changed without notice.